

Written and Edited by
Elethir Eroval

VOLCANO QUELLED!

Over the past several moons, the researcher Amrien has led the fight to quiet and calm the volcanic forces wreaking havoc and spitting red mana across our local landscape, and due to the work of Illmythil researchers, guards, assistants, and the Illmythil Adventuring Party, they have met with resounding success! This volcanic red mana well, seeded by the elemental forces that have been boiling across the area, could have spelled disaster for the Illmythil Outpost's unique position of being a magical research outpost specifically distant from strong sources of mana, a status which renders this Outpost able to study some of the harder to see and lesser known aspects of the stranger corners of magic. As such, this volcano could similarly not be fought with strong mana of opposing colors, which would have saturated the landscape and likewise saved us from the physical effects of the volcano but spelled disaster for the research. Instead, Amrien directed their teams to use oblique methods to fight the volcano; by quenching lava pools with river-water, shrinking and unweaving lava-streams, and chipping away at the red mana piece by piece using natural and mundane means, the volcano's landscape and its red mana were dissipated - without the need for strong aligned mana that could have pushed things out of balance in other strange directions. The situation will continue to be monitored over the next few moons, to ensure that all hot-spots, both physical and magical, have dispersed.

Monthly Riddle!

THE BEGINNING OF ETERNITY
THE END OF TIME AND SPACE
THE BEGINNING OF EVERY END
AND THE END OF EVERY PLACE
Last month's answer: *Roots!*

DARK CAVES, DEEP SHADOWS

Across the Illmythil region, strange things have been happening in caves. Reports have come in of incidents in which shadows grew out of cracks in the ground, becoming semi-physical and partially collapsing a mine; another incident up in the mountains involved a deep, haunted-feeling cave containing several morganti tendrils at the bottom. In both cases, the Illmythil Adventuring party investigated. Please send in reports of any similar situations to the Illmythil Outpost.

YOUR AD HERE

Advertise with the Illmythil Inquirer!
Contact Elethir Eroval for details.

ISSUE SIX
269.3.3
Secondmoon

MEET THE ARCHMAGES

For several moons now, our humble outpost has been host to a handful of visiting archmages, purportedly here to pry into the puzzling plight of our country's king. Despite their dearth of discovery, they have become a definite presence drifting about and delving into all sorts of affairs outside their areas. Let's meet them!



Archmage of Illion

Photo Credit: Tyson

Illion, this outpost's sponsor and our geographically closest major mage school, is the oldest mage school in the world, and proudly hosts the study of many varied areas of magic. There is of course a long history of enchanting, but also the exploration of the use of less rigidly formed magic - avoiding spells, and shaping magic directly to change and shape the world. Their archmage is pictured to the left.

Archmage of Nelenor

Photo Credit: Allison

The School of Nelenor sits to the west, in the shadow of the western mountains near the border with Torkord; they focus on the flow of mana and direct control of their own magic, disdaining the use of magic items. They have a fairly traditionalist viewpoint, with a focus on green mana due to their forested location, and produce the most sorcerers of any mage school. Their archmage is pictured to the right, beneath those historical trees.



Archmage of Celenrion

Photo Credit: Nico

Celenrion, the capital of our fair country, sits on the far northern frozen coast and hosts the Celenrion Mage School, a school whose focus on politics and social status leads them to view working with magic as a sort of dialogue or bargain, seeing magic as a negotiation; something that can be influenced, and can influence in return. They have a historical tendency to argue with the rules, something that has not always ended well for them or the city that hosts them. Their archmage is pictured to the left, participating in some sort of ritual with other mages of the school.



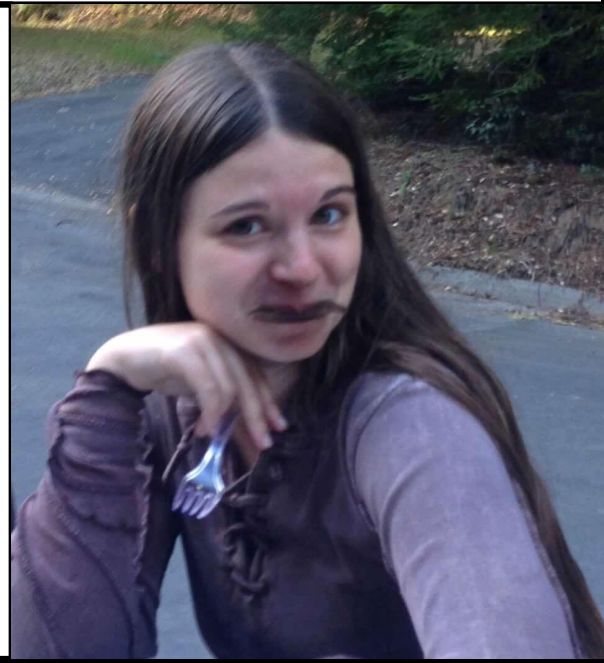
MEET THE ARCHMAGES: CONTINUED

I
L
L
M
Y
T
H
I
L
C
O
N
C
O
R
R

Archmage of Lirion

Photo Credit: Shaye

Lirion, the southernmost mage school, sits near the pass to the Falnorian region of Syenon, and has a long tradition of cultural exchange with them, leading to a mixture of the arts of magic and Barding. They accordingly have a great focus on the idea of magic as a drama, but also how magic fits in to art and beauty. The Archmage of Lirion, pictured to the right, is a performer and an actor, and here shows off some of their unique personal flair.



Archmage of Anminas

Photo Credit: Allison

Anminas sits nearly in the center of Illionor, and is a school of many perspectives, without one clear center - lacking even a central location - which is also their strength in magic: that liminal quality that lingers around the edges, half-seen, half-felt. Some say magic is a crossroads; others say magic is like a mosaic. This mysterious school is likely best approached obliquely. The Archmage of Anminas is pictured to the left, sitting left-most, with two other Anminas mages, showcasing the multitude of opinions present in that school of learning.

What Makes Illmythil Different?

We here in Illmythil study strange forces that can often be hidden by the strong elemental forces that surround other mage schools!

Honorable Mention: Eledh-dil-Inari

Photo Credit: Nico

Far to the north, in a frozen archipelago, sits Eledh-dil-Inari, another school and research outpost much like our own. They have sent no delegation to visit, but your humble editor was able to find the image of one regardless! This school's focus is on the crafting and enchantment of magic items; they describe the process as finding a house for magic, or finding a place for the magic to rest.

